



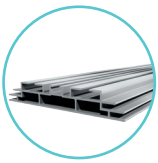
Profile 125mm

VLB125-CUSTOM



Create maximum impact with vibrant and powerful brand messaging and increased visibility thanks to our exclusive double-sided Vector profile.

- Free-standing, double-sided lightweight frame
- Linkable LED light system for consistent lighting over entire frame
- Double channel for inserting two graphics to create optimum brand impact and effect
- Robust aluminium profile, ideal for medium and large constructions
- Made to order also available



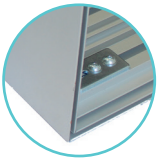
125mm aluminum profile



Easy assembly using angled section screw fixed brackets



Locating sections



Slim profile



Cable system



Ø30mm Reinforcement tubing



Fabric graphic with silicone edging which inserts into frame



Technical Information

- Anodised aluminum 6063 T6
- Dimensions: 125 x 20 mm
- Weight per linear metre: 1.645 kg
- Double-sided profile
- Assemble with screw brackets
- Fabric graphic with silicone edging inserts into frame

Recommended Media

- Backlit

Recommended Accessories



Flat Foot Retail (unit) FX295

- Metal foot for free-standing frame
- 550 x 180 x 5 mm



Extra thin transformer LED-RTL-01

- 24V transformer for linkable backlit lighting
- Integral fixing port for guiding transformer into frame
- Cable system
- Max power 75W



Linkable LED lighting system LED-RTL-05

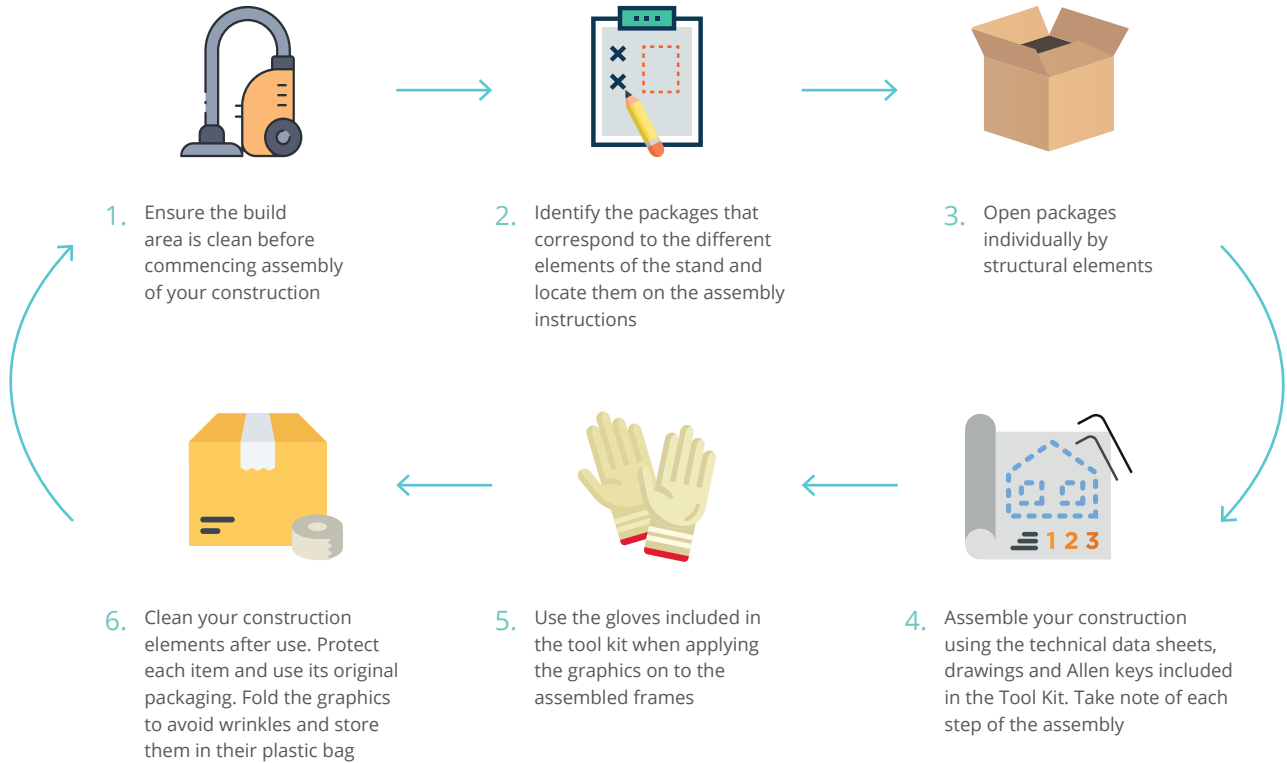
- Length of module: 360 mm
- Module with 5 lenses
- Power 13W - Voltage 24V
- Luminous flux: 450 lm
- Light temperature: 6500 K



Transport Bag AB-LINEAR

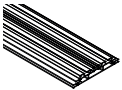
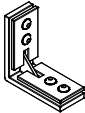
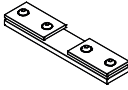
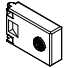
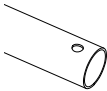
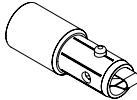
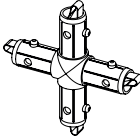
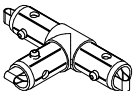

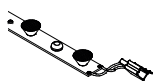

- Nylon bag with wheels
- Zipper and carrying handle
- 1370 x 290 x 290 mm
- Capacity up to 115 liters

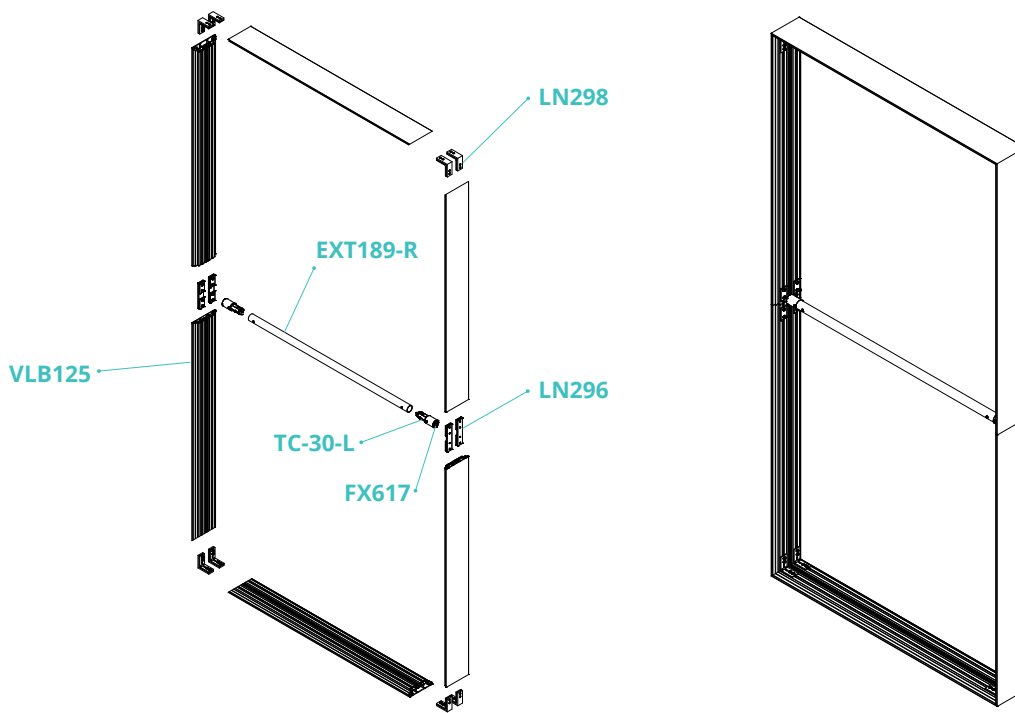
Are you preparing to construct your frame or stand?
Follow our step-by-step preparation guide for stress-free assembly



Your stand is now ready to be used as many times as you would like!

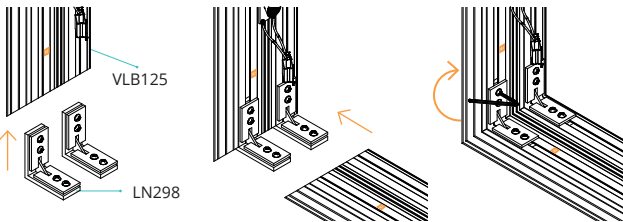
Components

	VLB125 Vector 125 mm section		LN298 Screw-in mounting bracket		LN296 Straight mounting connector		FX617 Cam lock
	EXT189-R Ø 30mm reinforcement tubing		TC-30-L Hybrid Connector		TC-30-X Cross connector for reinforcement tubing		TC-30-T Three section connector for reinforcement tubing
	LED-RTL-01 24V transformer with cable system		LED-RTL-05 LED 13W - 24 V		TOOLKIT Assembly instructions, data sheets, gloves and Allen key set		

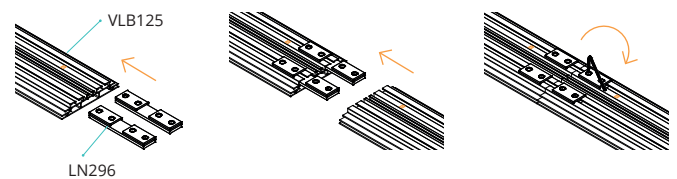


How to assemble sections and cross members of an LED frame

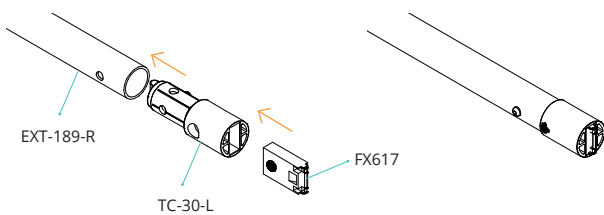
- 1 Assemble the corners using the mounting brackets and mounting marks
- △ Slightly unscrew the screws of the bracket so that it can be inserted into the groove of the profile



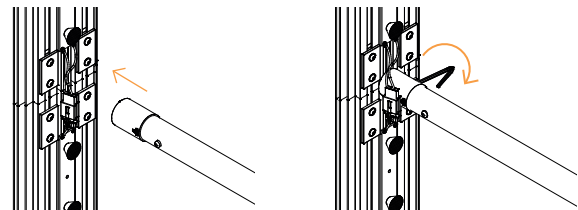
- 2 Assemble the straight sections using the connectors and mounting guides
- △ Slightly unscrew the screws of the bracket so that it can be inserted into the groove of the profile



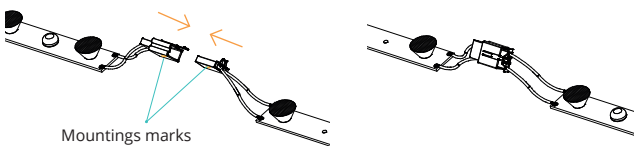
- 3 Assemble the reinforcing beams using the push-button connectors



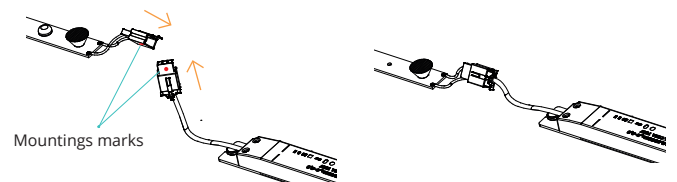
- 4 Lock the reinforcement cross-members to the frame



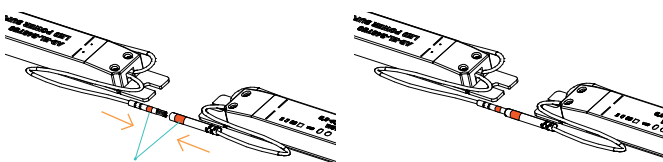
- 5 Connect the LED strips to each other using mounting marks



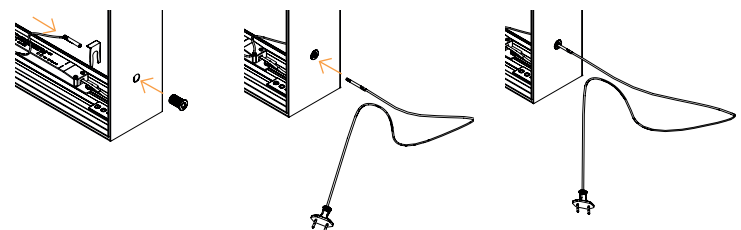
- 6 Connect the LED strips to the transformer using the mounting marks



- 7 Connect the transformers together using the mounting marks



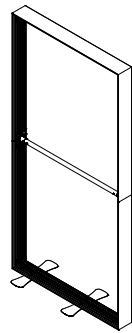
- 8 Connect the power cord using the port on the frame



Mountings marks

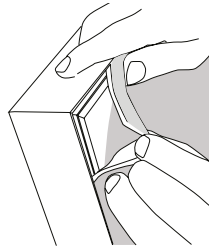
Large format printed graphics

The visuals have a sewn on silicone edge gasket (SEG) strip that makes their installation simple and fast. Begin by inserting the SEG strip from the corners to the center of the vector frame



Structure Profile 125mm

+



Graphic with SEG

=



How to install stabilising feet for free-standing use

A Retail flat foot assembly FX295

